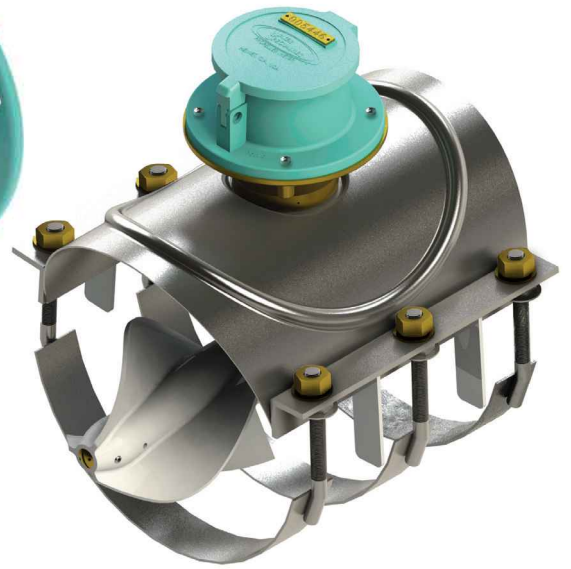


Water Specialties Propeller Flow Meter™



Built to Last in the Harshest Conditions

Injection molded thermoplastic bonnets. Hinged lid with padlock hasp to prevent unauthorized entry.

Fabricated steel meter tubes with straightening vanes. Coated inside and out with 12 to 15 mils of NSF approved fusion-bonded epoxy.

Cast iron or fabricated steel meter heads feature a protective coating of 12 to 15 mils of NSF approved fusion-bonded epoxy.

Stainless steel gearbox with removable one-piece stainless steel separator / spindle.

Long life ceramic dual thrust bearings handle both forward and reverse direction flow.

Water-lubricated ceramic sleeve propeller bearing rides on a ceramic sleeved stainless steel spindle.

Injection molded propeller designed to handle temperatures up to 140°F without pitch distortion. Also available for temperatures up to 250°F.

Change gears allow for on-location dial changes and recalibration without removing pressure from the line.

O-ring seals are used at the meter head and all other points where seals are required.

Oil-filled, stainless steel gearbox houses miter gears suspended between stainless steel ball bearings for smooth operation.



Six-Digit Flow Volume Totalizer

Standard: Six-digit flow volume totalizer. 3" diameter display with 100 division center sweep dial. Configurable in gallons, cubic feet, acre feet, or any standard liquid measuring units. Magnetic drive assures moisture tight seal. Available with optional 4-20mA and/or pulse output.



FlowCom Digital Indicator-Totalizer

Optional: FlowCom digital indicator-totalizer has a non-volatile memory. The five-digit indicator shows flow rate in 22 different units, including GPM, CFS, MGD. The eight-digit totalizer provides volumetric flow data and is available in 20 different units, including Gallons, AF, CF. Units of measurement are user-selectable. Battery life is 6-10 years. Housing is NEMA 4X rated. Available with optional 4-20mA and/or pulse output.



Indicator-Totalizer

Optional: Delivers instantaneous flow rate indication and totalization of flow volume. 4-inch diameter display with 250° dial, six-digit totalizer, and test sweep hand. Configurable in GPM, CFS, MGD or any standard liquid measuring units. Choice of standard totalizer measuring units. Available with optional 4-20mA and/or pulse output.

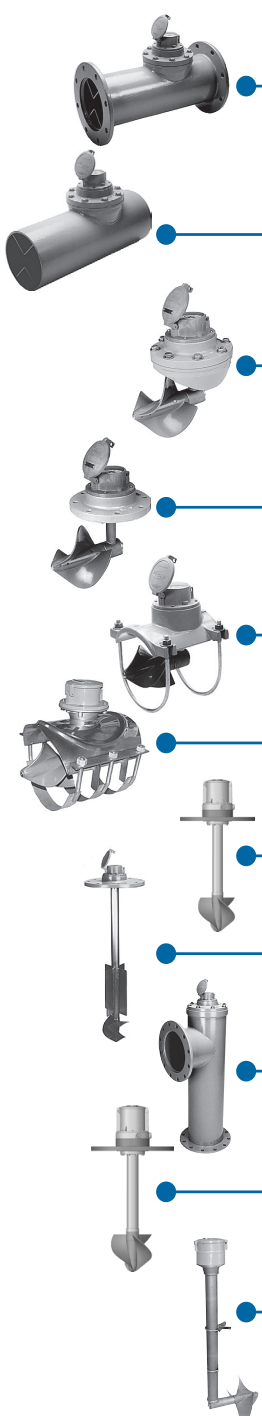


The Water Specialties Propeller Meter is uniquely designed to meet the flow measurement needs of water and wastewater users.

Employed extensively in the water and wastewater industry, it has built a reputation for durability, reliability and high performance.

Our knowledgeable staff can assess your flow measurement application and help you find the best metering technology for your situation.

To find out more about our flow measurement products, or for a free flow evaluation, contact your nearest Water Specialties representative today or visit our website at www.mccrometer.com.



		MODEL NO.	PRESSURE RATING	STANDARD TOTALIZER	INDICATOR/TOTALIZER	DIGITAL	INSTALLATION NOTES
2" - 48"	STEEL FLANGED-END TUBE METER	ML03	150 PSI	✓			
		ML04	150 PSI		✓		
		ML04D	150 PSI			✓	
		ML08D	300 PSI			✓	
3" - 48"	STEEL PLAIN-END TUBE METER	ML11	150 PSI	✓			●●
		ML12	150 PSI		✓		●●
		ML12D	150 PSI			✓	●●
4" - 72"	STEEL WELDING SADDLE METER	ML19	150 PSI	✓			●●●
		ML20	150 PSI		✓		●●●
		ML20D	150 PSI			✓	●●●
3" - 72"	METER HEAD ASSEMBLY	MLT1	150 PSI	✓			●
		MLI1	150 PSI		✓		●
		MLI1D	150 PSI			✓	●
		MLI2D	300 PSI			✓	●
4"	STRAP-ON SADDLE METER <i>DUCTILE IRON SADDLE</i>	LP22D	150 PSI			✓	●●●
		LP31	150 PSI	✓			●●●
6" - 20"	STRAP-ON SADDLE METER <i>STAINLESS STEEL SADDLE</i>	LP32	150 PSI		✓		●●●
		LP32D	150 PSI			✓	●●●
		VF28D	150 PSI			✓	○
4" - 20"	VERTICAL UPFLOW METER						
4" - 20"	VERTICAL DOWNFLOW METER	VF32D	150 PSI			✓	○
4" - 20"	VERTICAL UPFLOW TEE-TUBE METER	VF29	150 PSI	✓			○○
		VF30	150 PSI		✓		○○
		VF30D	150 PSI			✓	○○
10" - 72"	VERTICAL METER HEAD ASSEMBLY	VFT1	150 PSI	✓			
		VFI1	150 PSI		✓		
		VFI1D	150 PSI			✓	
10" - 72"	OPEN FLOW METER	OF12D	150 PSI			✓	○○○

Blue shaded model numbers are standard totalizer options.
 Replacement meter heads available for other brands of meters.
 Consult factory for special pressure ratings or materials of construction.

Installation notes

- Meters bolt into existing Water Specialties saddles or meter tubes.
- Installation is made by using one of many types of pipe couplings available or by welding to adjoining pipe.
- Installation is made by cutting a hole in the existing pipe and then attaching meter securely to the line.
- Installation is made to an appropriate cast iron or fabricated tee. Replace an elbow in existing systems, such as on the suction side of a centrifugal pump or laterals in irrigation systems.
- Installation is made to any vertical discharge line with the proper size flange connection, or to vertical discharge concrete turnouts with proper anchor bolts.
- Installation is made to any wall or vertical structure which will center the propeller in the measuring area. For use in ditch turnouts, reservoir outlets, closed conduits, or other similar installations that have a controlled flow measuring area and full flow of liquid.

FLOWCOM: YOUR DIGITAL REGISTER SOLUTION

Specially designed LCD display can be read in bright sunlight and will not be damaged by prolonged exposure to sunlight. The indicator-totalizer is encapsulated in a moisture resistant barrier so no moisture can come in contact with the electronic components. This solid state design offers extended life.

Long Life Battery

The battery has a 6 to 10 year lifespan.

Transmitter Optional Outputs

- AMI compatible output
- 4-20mA
- Pulse output
- Contact closure

Memory

The non-volatile memory retains the totalizer quantity and programming.

Easy Installation

The electronic meters can be installed vertically, horizontally, or inclined.

In-field Conversion Kits

Water Specialties mechanical propeller meters can be converted to electronic propeller meters in the field.



McCrometer's Expertise in Flow Physics

A Leader in Flow Metering Solutions

Our application engineers, researchers, and designers apply their expertise in real-world fluid dynamics to continuously improve our innovative flow metering solutions. Instrument, process, facility, and consulting engineers worldwide have confidently chosen McCrometer's flow meters for over 60 years.



Committed to Quality Manufacturing in the USA



McCrometer prides itself on the fact that all Water Specialties flow meters are designed, manufactured, and tested in the USA. Manufacturing takes place in our headquarters in Hemet, California and we own and operate one of the world's largest volumetric test facilities in Porterville, California. Our manufacturing facilities and quality control systems are the foundation for being a trusted supplier. Our USA based, high quality manufacturing is another reason our customers around the world have confidently chosen McCrometer flow meters for their most challenging flow applications since 1955.

Singapore Sales Enquiry:
Email: sales@pipeline.com.sg
Tel: (65) 6570 0310

Myanmar Sales Enquiry:
Email: sales@pipeline-mm.com
Tel: (95) 9509 5758



www.mccrometer.com

Corporate Headquarters:

3255 West Stetson Avenue | Hemet | CA 92545 | U.S.A.
Phone: 800-220-2279 | 951-652-6811 | Fax: 951-652-3078