

# WATER SOLUTION - CAST / DUCTILE IRON



## GATE VALVE - NON-RAISING STEM

### FM411W-NRS

- Class 125 Cast Iron A126-B
- Face to Face comply to ANSI B16.10
- End Flange conform to ANSI B16.1
- Bolted Bonnet
- Non-Raising Stem
- Solid Wedge
- Bronze Mounted

Also available in AWWA C515. Epoxy coated interior & exterior to AWWA C550



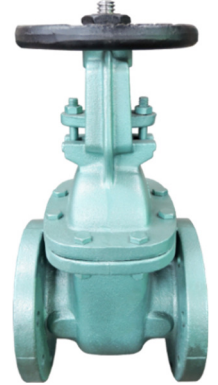
2" - 20"

## GATE VALVE - RAISING STEM

### FM411W-RS

- Class 125 Cast Iron A126-B
- Face to Face comply to ANSI B16.10
- End Flange conform to ANSI B16.1
- Outside Screw and Yoke
- Bolted Bonnet
- Raising Stem
- Solid Wedge Disc

Also available in AWWA C515. Epoxy coated interior & exterior to AWWA C550  
Conform to MSS SP-70



2" - 20"

## GLOBE VALVES

### FM412W

- Class 125 Cast Iron A126-B
- Face to Face comply to ANSI B16.10
- End Flange conform to ANSI B16.1
- Bolted Bonnet
- Renewable Seat and Disc
- Bronze Mounted



2" - 20"

## Y- STRAINER

### FM414W

- Class 125 Cast Iron A126-B
- Max Working Pressure 125psi @ 450°F
- SUS 304 Screen
- 2" - 3", 0.045 perf
- 4" - 20", 0.125 perf



2" - 20"

## SWING CHECK VALVES

### FM413W

- Class 125 Cast Iron A126-B
- Face to Face comply to ANSI B16.10
- End Flange conform to ANSI B16.1
- Bolted Bonnet
- Renewable Seat and Disc
- Horizontal Swing

Conform to MSS SP-71

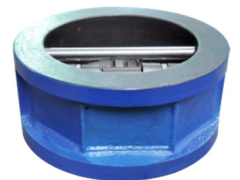


2" - 24"

## DUAL PLATE WAFER CHECK

### FM416W

- Class 125 Cast Iron A126-B
- End Flange conform to ANSI B16.1
- Twin Plate Wafer Style



2" - 12"